

## SCHEDULE OF EVENTS

Saturday, December 1, 2012

### New England Dermatological Society Meeting At Boston Medical Center

7:30 – 8:00 am	<b>Registration and Continental Breakfast</b> <i>Shapiro Ambulatory Clinic</i>
8:00 – 9:45 am	<b>Patient and Pathology Viewing</b> <i>Shapiro Ambulatory Clinic</i>
9:45 – 10:00 am	<b>NEDS Business Meeting</b> <i>670 Albany Street, Ground Floor Auditorium</i>
10:00 – 12:45 pm	<b>Case Discussion and Speakers</b> Moderators: Dan Miller, MD; Debjani Sahni, MBBS <i>670 Albany Street, Ground Floor Auditorium</i>
10:00 – 10:30 am	<b>Case Discussion 1-6</b>
10:30 – 10:45 am	<b>“Scleroderma and Updates on Tissue Fibrosis”</b> Guest Speaker, Robert Simms, MD
10:45 – 11:15 am	<b>Case Discussion 7-12</b>
11:15 – 11:30 am	<b>“Vismodegib: Another step forward in non-surgical skin cancer management”</b> Guest Speaker, Barbara Gilchrest, MD
11:30 – 12:00 pm	<b>Case Discussion 13-19</b>
12:00 – 12:15 pm	<b>“Updates on Body Dysmorphic Disorder”</b> Guest Speaker, Neelam Vashi, MD
12:15 – 12:45 pm	<b>Case Discussion 20-25</b>
12:45 – 1:00 pm	<b>Final Comments &amp; Meeting Adjourns</b> <b>Box Lunch &amp; Seating Provided</b>

### FUTURE MEETINGS OF THE NEW ENGLAND DERMATOLOGICAL SOCIETY

**February 2, 2013**  
**Clinical Meeting**  
Lahey Clinic  
Harvard University  
Burlington, MA

**April 27, 2013**  
**Didactic Symposium**  
UConn Health Center  
University of Connecticut  
Farmington, CT

**October 26, 2013**  
**Clinical Meeting**  
UMass Medical Center  
University of Massachusetts  
Amherst, MA

Please do not discuss cases, diagnoses  
or therapy in the presence of patients.  
No photography is allowed.

## PLANNING COMMITTEE FACULTY & SPEAKERS

### Speakers

**Barbara A. Gilchrest, MD**  
Professor and Chair Emeritus  
Boston University School of Medicine Department of Dermatology

**Robert W. Simms, MD**  
Professor and Section Chair  
Boston University School of Medicine Arthritis Center/Rheumatology

**Neelam Vashi, MD**  
Assistant Professor of Dermatology  
Director, New England Center for Ethnic Skin at Boston University  
Boston University School of Medicine Department of Dermatology

### Moderator/Planning Committee

**Dan Miller, MD** (Moderator/ Planner)  
Associate Professor of Dermatology and Pathology  
Director of Inpatient Dermatology Services  
Boston University School of Medicine Department of Dermatology

**Debjani Sahni, MD** (Moderator/ Planner)  
Staff Dermatologist

Director, Cutaneous Lymphoma Program  
Boston University School of Medicine Department of Dermatology

**Yoon Soo Cindy Bae, MD** (Planner)  
3rd Year Dermatology Resident  
Boston University School of Medicine Department of Dermatology

**Lana Kashlan, MD** (Planner)  
3rd Year Dermatology Resident  
Boston University School of Medicine Department of Dermatology

**Kathryn Kent, MD** (Planner)  
3rd Year Dermatology Resident  
Boston University School of Medicine Department of Dermatology

*CME Credit/Accreditation information on pages 4 & 5*



## DIRECTIONS

- **From the North:** Take Route 93 South (If coming from Route 1, follow Route 1 South (Via Mystic/ Tobin Bridge) to Route 93 South). Take Exit 18 (Mass Ave). At traffic light, take right onto access road; stay in right lane. At end of access road, turn right onto Massachusetts Ave. Turn right onto Albany Street; the Shapiro Ambulatory Care Center will be on your left. To access the parking garage, turn right onto East Concord Street; entrance to garage is on left.
- **From the South:** Take Expressway North (Route 93 / 3). Take Exit 18. At the third traffic light, take left onto access road stay in right lane. At end of access road, turn right onto Massachusetts Ave. Turn right onto Albany Street; the Shapiro Ambulatory Care Center will be on your left. To access the parking garage, turn right onto East Concord Street; entrance to garage is on left.
- **From the West:** Take the Massachusetts Turnpike (Route 90) East to end. Take Expressway South (Route 93). Take Exit 18 (Mass Ave). At traffic light, take right onto access road; stay in the right lane. At end of access road, turn right onto Massachusetts Ave. Turn right onto Albany Street; the Shapiro Ambulatory Care Center will be on your left. To access the parking garage, turn right onto East Concord Street; entrance to garage is on left.
- **Parking:** Parking is available in the garage at **710 Albany Street** (closest to Moakley Building) or in the Doctors Office (DOB) garage at **720 Harrison Avenue**. Hourly parking rates are available at [www.bumc.bu.edu/parking](http://www.bumc.bu.edu/parking).

## FOR MORE INFORMATION

Visit the **NEDS** website at [www.nederm.org](http://www.nederm.org) or contact  
Shawna Melvin, Administrator  
New England Dermatological Society  
Mail: PO Box 71, Marlboro, MA 01752  
Phone: 877-763-3376  
Fax: 877-963-3376  
E-mail: [info@nederm.org](mailto:info@nederm.org)

**BOSTON UNIVERSITY MEDICAL CENTER CAMPUS MAP**



**Parking:** Parking is available in the garage at 710 Albany Street (closest to Moakley Building) or in the Doctors Office (DOB) garage at 720 Harrison Avenue. Hourly parking rates are available at [www.bumc.bu.edu/parking](http://www.bumc.bu.edu/parking).

**CME Credit/Accreditation**

The Massachusetts Medical Society designates this live activity for a maximum of **5.0 AMA PRA Category 1 Credits™**. Physicians should claim only the credit commensurate with the extent of their participation in the activity.

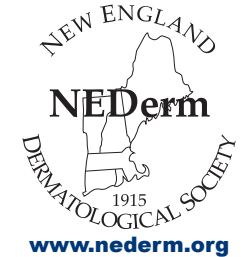
This activity has been planned and implemented in accordance with the Essential Areas and policies of the Accreditation Council for Continuing Medical Education through the Joint Sponsorship of the Massachusetts Medical Society and New England Dermatological Society.

The Massachusetts Medical Society is accredited by the Accreditation Council for Continuing Medical Education to provide continuing medical education for physicians.

**As a result of participating in this activity, learners will be able to:**

- a. Identify signs, symptoms, and pathophysiology of rare and unusual dermatological disease and conditions.
- b. Formulate a diagnosis and describe evidence-based best practices for treatment of dermatological diseases and conditions.
- c. List updates on what is new in dermatology guidelines and resulting patient applications.

D E R M A T O L O G I C A L



New England  
Dermatological  
Society

**CLINICAL MEETING**

**Hosted by:**  
Boston University  
Department of Dermatology

**Patient Viewing**  
Shapiro Ambulatory Care Center  
725 Albany Street  
8<sup>th</sup> floor, Suite 8B  
Boston, MA 02118

**Case Discussion & Lectures**  
670 Albany Street  
Ground Floor Conference Room  
Boston, MA 02118