

## SCHEDULE OF EVENTS

Saturday, February 1, 2014

### New England Dermatological Society Meeting At Beth Israel Deaconess Medical Center

- 7:30 – 8:00 am**      **Registration and Continental Breakfast**  
BIDMC East Campus, Shapiro Clinical Center  
2<sup>nd</sup> floor hallway, 330 Brookline Ave, Boston, MA 02215
- 8:00 – 9:45 am**      **Patient Viewing**  
BIDMC East Campus, Shapiro Clinical Center, 2<sup>nd</sup> floor  
(Dermatology and Orthopedics clinics)
- 10:00 – 10:15 am**      **NEDS Business Meeting**  
The Inn at Longwood Medical  
342 Longwood Avenue, Boston, MA 02115
- 10:15 – 11:00 am**      **Case Discussion 1-7**  
The Inn at Longwood Medical  
**Moderators:**  
    **Su-jean Seo, MD, PhD**  
    **Peggy A. Wu, MD**
- 11:00 – 11:15 am**      **Guest Speaker: Anand Mahadedan, MD**  
    **“Adjuvant Radiation therapy for**  
    **Skin Cancers”**
- 11:15 – 12:00 pm**      **Case Discussion 8-15**
- 12:00 – 12:15 pm**      **Guest Speaker: Caroline C. Kim, MD**  
    **“Dysplastic nevi with positive**  
    **biopsy margins:**  
    **To re-excise, or not to re-excise?”**
- 12:15 – 1:00 pm**      **Case Discussion 16-21**
- 1:00 – 1:15 pm**      **Guest Speaker: Susan J. Huang, MD**  
    **“Insights into patient satisfaction and**  
    **quality of care”**
- 1:15 – 1:20 pm**      **Final Comments and Meeting Adjourns**  
    **Box Lunches Provided**

### FUTURE MEETINGS OF THE NEW ENGLAND DERMATOLOGICAL SOCIETY

**April 12, 2014**  
Didactic Meeting  
Boston Children's Hospital  
Harvard Dermatology Program  
Boston, MA

**October 25, 2014**  
Clinical Meeting  
Yale School of Medicine  
Department of Dermatology  
New Haven, CT

Please do not discuss cases, diagnoses  
or therapy in the presence of patients.  
No photography is allowed.

## PLANNING COMMITTEE FACULTY & SPEAKERS

### Speakers

**Susan J. Huang, MD** (*Speaker*)  
Attending Physician, Department of Dermatology  
Beth Israel Deaconess Medical Center  
Instructor in Dermatology  
Harvard Medical School

**Caroline C. Kim, MD** (*Speaker*)  
Director, Pigmented Lesion Clinic  
Beth Israel Deaconess Medical Center  
Assistant Professor in Dermatology  
Harvard Medical School

**Anand Mahadevan, MD** (*Speaker*)  
Attending Physician, Radiation Therapy  
Beth Israel Deaconess Medical Center  
Assistant Professor in Radiation Oncology  
Harvard Medical School

### Moderators/Planning Committee

**Su-jean Seo, MD, PhD** (*Moderator*)  
Medical Director, Department of Dermatology  
Beth Israel Deaconess Medical Center  
Instructor in Dermatology  
Harvard Medical School

**Peggy A. Wu, MD** (*Moderator*)  
Attending Physician, Department of Dermatology  
Beth Israel Deaconess Medical Center  
Instructor in Dermatology  
Harvard Medical School

**Robert S. Stern, MD** (*Planning Committee*)  
Chief, Department of Dermatology  
Beth Israel Deaconess Medical Center  
Carl J. Herzog Professor of Dermatology  
Harvard Medical School

**Rachel V. Reynolds, MD** (*Planning Committee*)  
Attending Physician, Department of Dermatology  
Beth Israel Deaconess Medical Center  
Program Director, Residency Training Program  
Assistant Professor of Dermatology  
Harvard Medical School

- **Directions from Shapiro Clinic Center to Longwood Hall**  
From the East Campus Main Entrance: Once you exit the main Shapiro entrance on the lobby floor, turn right to go across the street to the Inn at Longwood Medical. You will see a large sign that says the Inn at Longwood Avenue. Enter through the Inn and take the elevators to the Galleria Level and walk into Longwood Hall.

*CME Credit/Accreditation information and maps on pages 4 & 5*

## DIRECTIONS

Limited validated parking available at the Pilgrim Garage.  
Additional parking at the Longwood Avenue Garage.

- **From the North – I-93 South/Storrow Drive:** Take I-93 south, Exit 26 toward Storrow Drive. From Storrow Drive, take the Fenway exit. Drive over the overpass and stay right at the light to merge onto Boylston Street outbound. Continue onto **Brookline Avenue**, and make your next left onto **Longwood Avenue**. \*\*\*To enter **Pilgrim Garage** next to the Inn at Longwood Medical, make a left from Brookline Avenue onto Longwood Avenue. Before you hit Binney Street, on the right, you will find the **Pilgrim Garage: 350 Longwood Avenue, Boston, MA 02115**. To enter the **Longwood Avenue Garage** across from the Shapiro Center. You will see signs for the Carl J. Shapiro Clinical Center. Take a left onto Binney Street, and on your right, you will find the Longwood Avenue Garage: **333 Longwood Avenue, Boston, MA 02215**.\*\*
- **From the North – I-95/Route 1/Leverette Connector:** Take I-95 south/Route 1 south toward Boston, over the Tobin Bridge. Merge onto the Leverette Connector. Follow the signs to Storrow Drive west. Continue on Storrow Drive to the Fenway/Route 1 south exit (on left). Turn right onto Boylston Street. At the third set of lights, bear left onto Brookline Avenue. Make a left onto Longwood Avenue. Please see \*\* at the end of the first set of directions from here on.
- **From the Northwest – Route 2:** Follow Route 2 east toward Boston to Fresh Pond Parkway. Cross the Charles River onto Soldiers Field Road, this becomes Storrow Drive east. Take the Fenway/Route 1 south exit. Turn right onto Boylston Street. At the third set of lights, bear left onto Brookline Avenue. Make your next left onto Longwood Avenue. Please see \*\* at the end of the first set of directions from here on.
- **From the West – Mass Pike:** Heading east on the Massachusetts Turnpike (I-90), take Route 128 south (exit 14) to Route 9 east (exit 20A). Follow Route 9 to the intersection of Brookline Avenue in Brookline Village. Turn left onto Brookline Avenue. Make your next left onto Longwood Avenue. Please see \*\* at the end of the first set of directions from here on.
- **From the South – Route 128:** Take I-95 north/Route 128 north/Route 24 north to Route 3 north to Southeast Expressway through the I-93 North Tunnel to Exit 26 toward Storrow Drive. Follow the signs to Storrow Drive west. Continue to the Fenway/Route 1 south exit. Turn right onto Boylston Street. At the third set of lights, bear left onto Brookline Avenue. Make a left onto Longwood Avenue. Please see \*\* at the end of the first set of directions from here on.
- **Directions to Registration from the Garages:** From the Longwood Avenue Garage: Cross the street from the Longwood Avenue Garage and enter the Carl J. Shapiro Clinical Center. Take the elevators to the 2<sup>nd</sup> floor and walk away from the Orthopedics Unit. The registration tables will be next to the Dermatology Clinic on your left. From Pilgrim Garage: Exit the Pilgrim Garage and walk across Longwood Avenue on Binney Street. Enter through the East Campus Carl J. Shapiro Clinical Center. Take the stairs by the entrance to the 2<sup>nd</sup> floor. You will see tables for registration there.

## FOR MORE INFORMATION

Visit the **NEDS** website at [www.nederm.org](http://www.nederm.org) or contact  
New England Dermatological Society

Mail: PO Box 529127, Waltham, MA 02454-9127

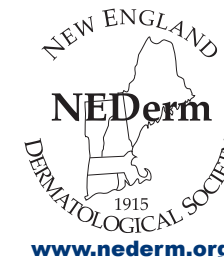
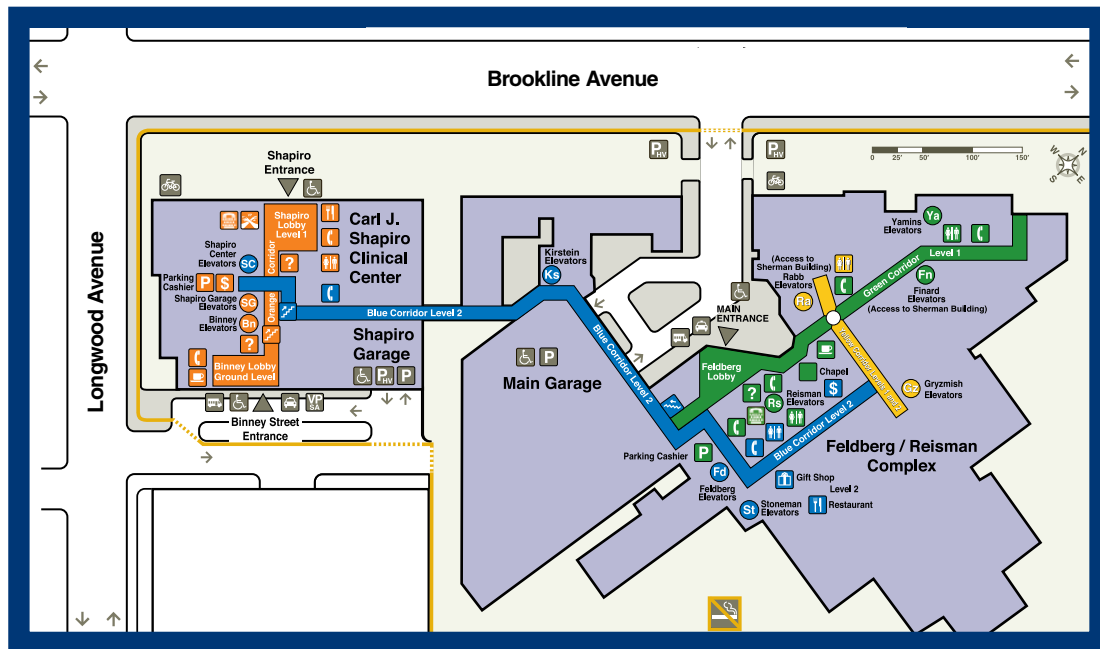
Phone: 877-763-3376

Fax: 877-963-3376

E-mail: [info@nederm.org](mailto:info@nederm.org)

## BETH ISRAEL DEACONESS MEDICAL CENTER EAST CAMPUS SHAPIRO CLINICAL CENTER

FEBRUARY 1, 2014



New England  
Dermatological  
Society

CLINICAL MEETING

This activity is jointly sponsored by the Massachusetts Medical Society and New England Dermatological Society

### CME Credit/Accreditation

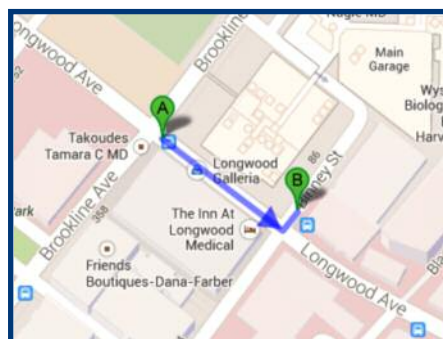
The Massachusetts Medical Society designates this live activity for a maximum of **5.0 AMA PRA Category 1 Credits™**. Physicians should claim only the credit commensurate with the extent of their participation in the activity.

This activity has been planned and implemented in accordance with the Essential Areas and policies of the Accreditation Council for Continuing Medical Education through the Joint Sponsorship of the Massachusetts Medical Society and New England Dermatological Society.

The Massachusetts Medical Society is accredited by the Accreditation Council for Continuing Medical Education to provide continuing medical education for physicians.

**As a result of participating in this activity, learners will be able to:**

- Identify signs, symptoms, and pathophysiology of rare and unusual dermatological disease and conditions.
- Formulate a diagnosis and describe evidence-based best practices for treatment of dermatological diseases and conditions.
- List updates on what is new in dermatology guidelines and resulting patient applications.



### East Campus Garage Locations

- A: Pilgrim Garage: 350 Longwood Avenue, Boston**
- Limited validated parking available at this Garage.
  - Open 24 hours a day.

#### Additional Parking:

- B: Longwood Avenue Garage: 333 Longwood Avenue, Boston**
- Open 24 hours a day.

D E R M A T O L O G I C A L

**Hosted by:**  
Beth Israel Deaconess Medical Center  
Department of Dermatology  
Harvard Medical School

**Patient Viewing**  
Shapiro Clinical Center, 2<sup>nd</sup> floor  
330 Brookline Avenue  
Boston, MA 02215

**Case Discussion and Lectures**  
The Inn at Longwood Medical  
Longwood Hall  
342 Longwood Avenue  
Boston, MA 02115