

SCHEDULE OF EVENTS

Saturday, December 7, 2013

New England Dermatological Society Meeting At Boston Medical Center

7:30 – 8:00 am	Registration and Continental Breakfast <i>Shapiro building, 725 Albany Street, 8th floor</i>
8:00 – 9:45 am	Patient and Pathology Viewing <i>Shapiro building, 725 Albany Street, 8th floor</i>
9:45 – 10:00 am	NEDS Business Meeting and Case Discussion and Speakers <i>670 Albany Street, 1st Floor</i>
10:00 – 10:30 am	Case Discussion, Case 1-5
10:30 – 10:45 am	“Oral cancer, dysplasia, and the management of leukoplakia” Guest Speaker, Timothy Osborn, DDS MD
10:45 – 11:15 am	Case Discussion, Cases 6-11
11:15 – 11:30 am	“What’s new in scarring alopecia” Guest Speaker, Lynne J. Goldberg, MD
11:30 – 12:00 pm	Case Discussion, Cases 11-15
12:00 – 12:15 pm	“Transitional Research: Proof of principle in the standard and more advanced management of scleroderma digital ulcers” Guest Speaker, Vincent Falanga, MD
12:15 – 12:45 pm	Case Discussion, Cases 15-20
12:45 – 1:00 pm	Final Summary and Closing Remarks & ~Meeting Adjourns~ Box Lunch & Seating Provided

FUTURE MEETINGS OF THE NEW ENGLAND DERMATOLOGICAL SOCIETY

February 1, 2014

Clinical Meeting
Beth Israel Deaconess Medical
Harvard Medical School
Department of Dermatology
Boston, MA

April 12, 2014

Didactic Meeting
Children’s Hospital
Harvard Medical School
Division of Dermatology
Location: TBD

Please do not discuss cases, diagnoses
or therapy in the presence of patients.
No photography is allowed.

PLANNING COMMITTEE FACULTY & SPEAKERS

Speakers

Timothy Osborn, DDS MD (*Speaker*)
Assistant Professor
Department of Oral and Maxillofacial Surgery
Director of Preliminary Internship Program
Boston University Henry M. Goldman School of Dental Medicine

Lynne J. Goldberg, MD (*Speaker*)
Professor of Dermatology and Pathology and Laboratory Medicine
Director of Hair Clinic
Boston University Department of Dermatology

Vincent Falanga, MD (*Speaker*)
The Barbara A. Gilchrest Professor of Dermatology
Vice-Chair for Research
Program Director, Department of Dermatology
Professor of Biochemistry
Boston University Department of Dermatology

Moderators/Planning Committee

Amy Chen, MD (*Moderator and Planning Committee*)
Assistant Professor of Dermatology
Boston University Department of Dermatology

Christina Lam, MD (*Moderator and Planning Committee*)
Assistant Professor of Dermatology
Boston University Department of Dermatology

Deon Wolpowitz, MD, PhD (*Moderator and Planning Committee*)
Assistant Professor of Dermatology, Pathology
Boston University Department of Dermatology

Angela Beckford, MD, MPH (*Planning Committee*)
Resident, Dermatology
Boston University School of Medicine

Erica Dommasch, MD (*Planning Committee*)
Resident, Dermatology
Boston University School of Medicine

Stephanie Gan, MD (*Planning Committee*)
Resident, Dermatology
Boston University School of Medicine

- **Walking Directions From the Shapiro building (725 Albany Street) to 670 Albany Street:** Turn left out of the main entrance. Walk east on Albany Street, past East Concord Street. Take a right at the clock tower and walk between the City Convenience store and the parking garage. The entrance will be on the left.

CME Credit/Accreditation information on pages 4 & 5

DIRECTIONS

- **From the North:** Take Route 93 South (If coming from Route 1, follow Route 1 South (Via Mystic/ Tobin Bridge) to Route 93 South). Take Exit 18 (Mass Ave). At traffic light, take right onto access road; stay in right lane. At end of access road, turn right onto Massachusetts Ave. Turn right onto Albany Street; the Shapiro Ambulatory Care Center will be on your left. To access the parking garage, turn right onto East Concord Street; entrance to garage is on left.
- **From the South:** Take Expressway North (Route 93 / 3). Take Exit 18. At the third traffic light, take left onto access road stay in right lane. At end of access road, turn right onto Massachusetts Ave. Turn right onto Albany Street; the Shapiro Ambulatory Care Center will be on your left. To access the parking garage, turn right onto East Concord Street; entrance to garage is on left.
- **From the West:** Take the Massachusetts Turnpike (Route 90) East to end. Take Expressway South (Route 93). Take Exit 18 (Mass Ave). At traffic light, take right onto access road; stay in the right lane. At end of access road, turn right onto Massachusetts Ave. Turn right onto Albany Street; the Shapiro Ambulatory Care Center will be on your left. To access the parking garage, turn right onto East Concord Street; entrance to garage is on left.
- **Parking:** Parking is available in the garage at **710 Albany Street** (closest to Moakley Building) or in the Doctors Office (DOB) garage at **720 Harrison Avenue**. Hourly parking rates are available at www.bumc.bu.edu/parking.

FOR MORE INFORMATION

Visit the **NEDS** website at www.nederm.org or contact
Mary Lou Sabbag, Administrator
New England Dermatological Society
Mail: PO Box 66096, Auburndale, MA 02466
Phone: 877-763-3376
Fax: 617-663-6510
E-mail: info@nederm.org

BOSTON UNIVERSITY MEDICAL CENTER CAMPUS MAP



Parking: Parking is available in the garage at 710 Albany Street (closest to Moakley Building) or in the Doctors Office (DOB) garage at 720 Harrison Avenue. Hourly parking rates are available at www.bumc.bu.edu/parking.



This activity is jointly sponsored by the Massachusetts Medical Society and New England Dermatological Society

CME Credit/Accreditation

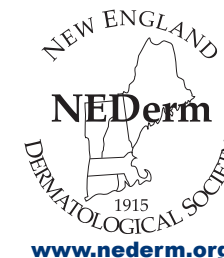
The Massachusetts Medical Society designates this live activity for a maximum of 4.75 *AMA PRA Category 1 Credits*™. Physicians should claim only the credit commensurate with the extent of their participation in the activity.

This activity has been planned and implemented in accordance with the Essential Areas and policies of the Accreditation Council for Continuing Medical Education through the Joint Sponsorship of the Massachusetts Medical Society and New England Dermatological Society.

The Massachusetts Medical Society is accredited by the Accreditation Council for Continuing Medical Education to provide continuing medical education for physicians.

As a result of participating in this activity, learners will be able to:

- Identify signs, symptoms, and pathophysiology of rare and unusual dermatological disease and conditions.
- Formulate a diagnosis and describe evidence-based best practices for treatment of dermatological diseases and conditions.
- List updates on what is new in dermatology guidelines and resulting patient applications.



New England
Dermatological
Society

CLINICAL MEETING

Hosted by:
Boston University
Department of Dermatology

Patient Viewing
Shapiro Ambulatory Care Center
725 Albany Street
8th floor, Suite 8B
Boston, MA 02118

Case Discussion & Lectures
670 Albany Street
Ground Floor Conference Room
Boston, MA 02118

